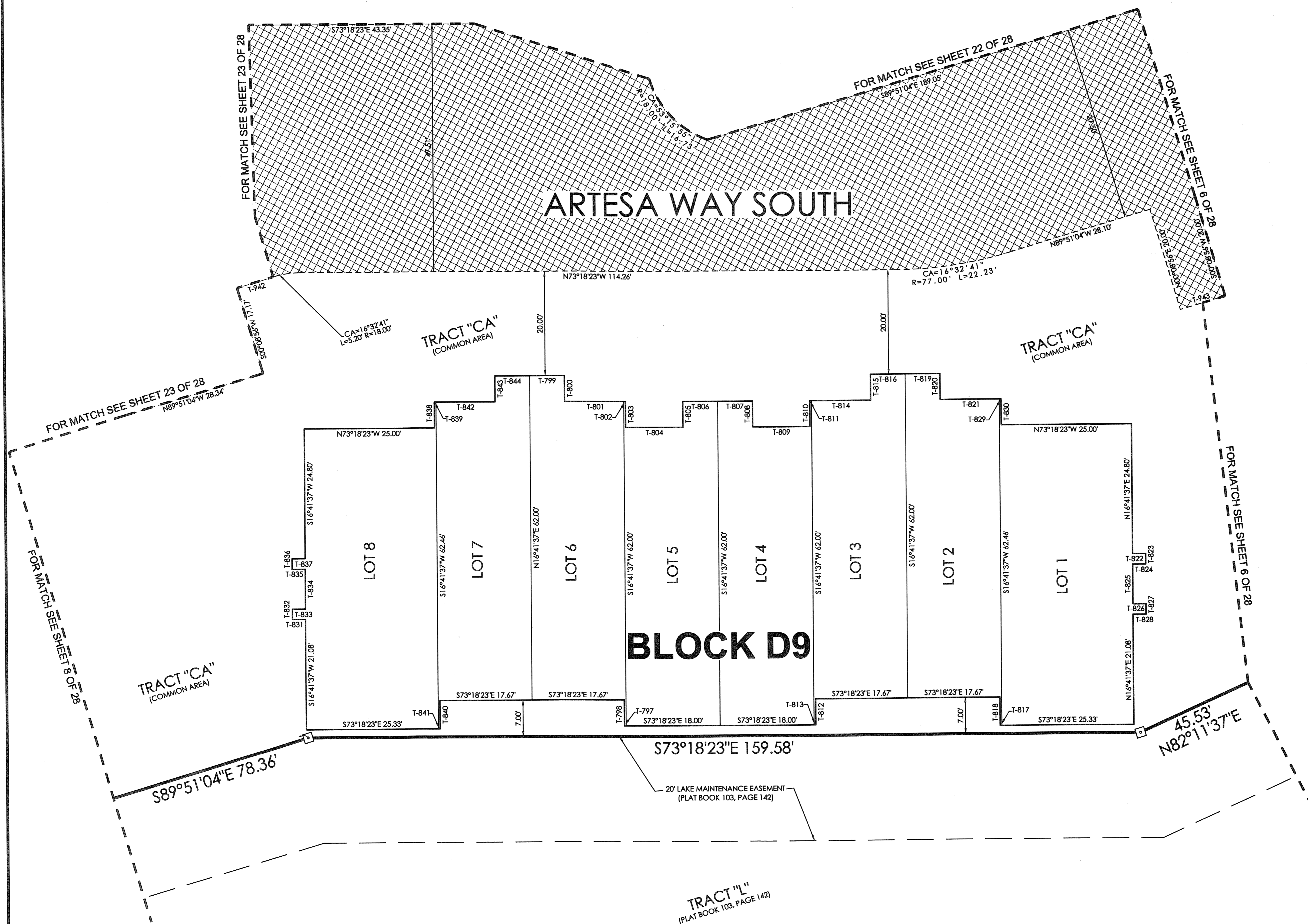
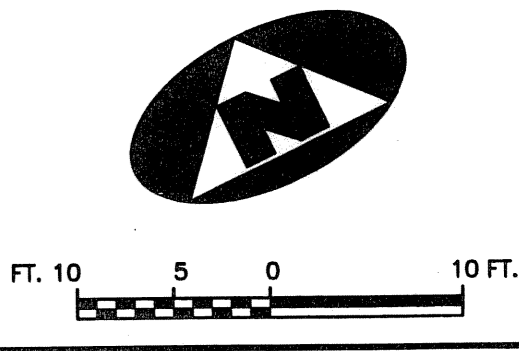


# CIELO TOWNHOMES AT THE SHOPS OF DONALD ROSS

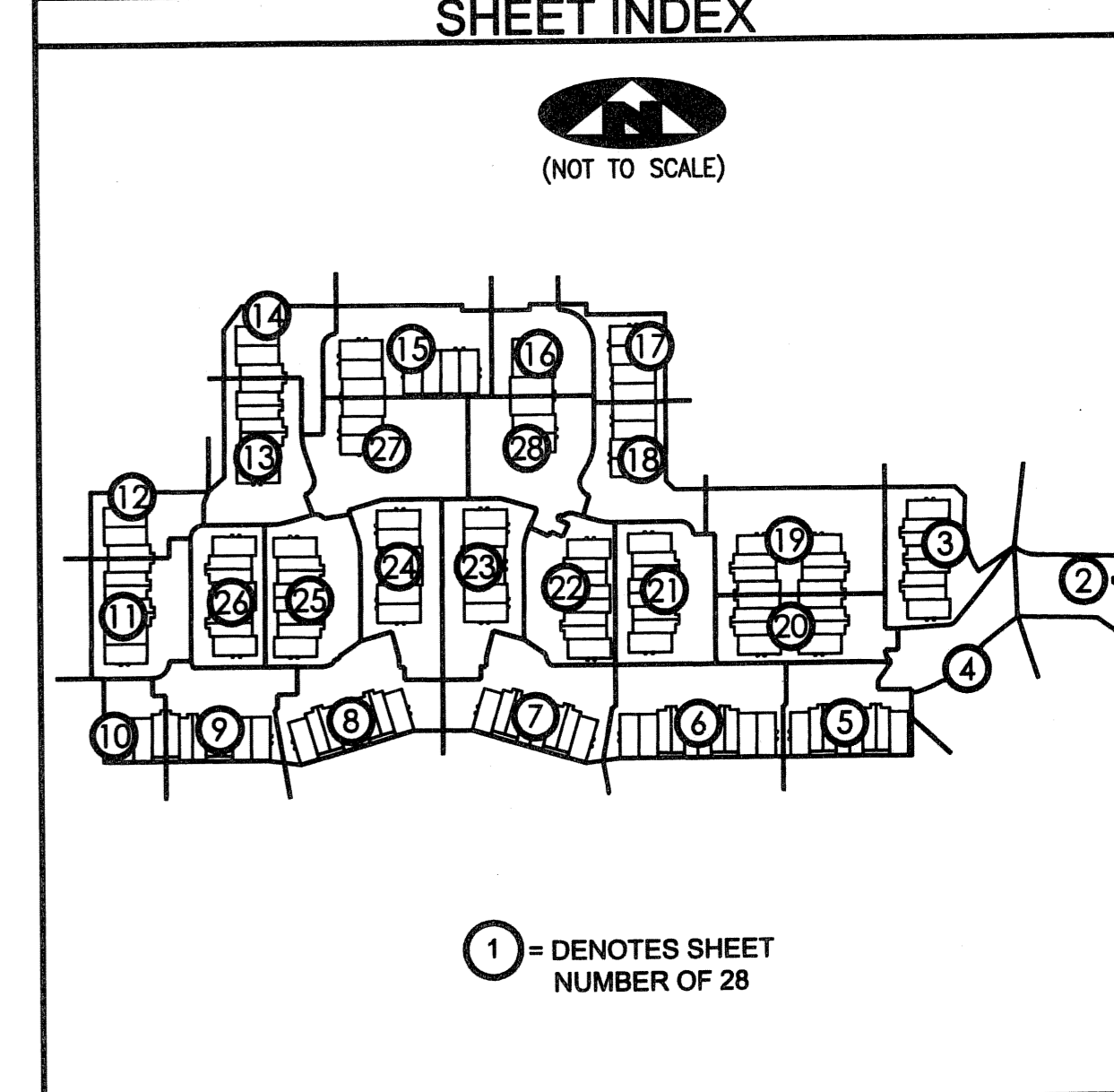
BEING A REPLAT OF TRACT "R", THE SHOPS OF DONALD ROSS REPLAT OF TRACT "A", RECORDED IN PLAT BOOK 103, PAGE 142, PUBLIC RECORDS, PALM BEACH COUNTY, FLORIDA AND LYING IN THE NORTHWEST ONE-QUARTER OF SECTION 25, TOWNSHIP 41 SOUTH, RANGE 42 EAST, CITY OF PALM BEACH GARDENS, PALM BEACH COUNTY, FLORIDA.

163



**TANGENT TABLE**

T-797 S73°18'23"E 0.33'	T-822 N73°18'23"W 2.50'
T-798 S16°41'37"W 5.00'	T-823 N16°41'37"E 2.00'
T-799 N73°18'23"W 6.67'	T-824 S73°18'23"E 2.50'
T-800 N16°41'37"E 5.00'	T-825 N16°41'37"E 7.58'
T-801 N73°18'23"W 11.33'	T-826 N73°18'23"W 2.50'
T-802 N73°18'23"W 0.33'	T-827 N16°41'37"E 2.00'
T-803 N16°41'37"E 5.00'	T-828 S73°18'23"E 2.50'
T-804 N73°18'23"W 11.00'	T-829 N73°18'23"W 0.33'
T-805 S16°41'37"W 5.00'	T-830 N16°41'37"E 5.00'
T-806 N73°18'23"W 6.67'	T-831 S73°18'23"E 2.50'
T-807 N73°18'23"W 6.67'	T-832 S16°41'37"W 2.00'
T-808 N16°41'37"E 5.00'	T-833 N73°18'23"W 2.50'
T-809 N73°18'23"W 11.00'	T-834 S16°41'37"W 7.58'
T-810 S16°41'37"W 5.00'	T-835 S73°18'23"E 2.50'
T-811 N73°18'23"W 0.33'	T-836 S16°41'37"W 2.00'
T-812 N16°41'37"E 5.00'	T-837 N73°18'23"W 2.50'
T-813 S73°18'23"E 0.33'	T-838 S16°41'37"W 5.00'
T-814 N73°18'23"W 11.33'	T-839 N73°18'23"W 0.33'
T-815 S16°41'37"W 5.00'	T-840 N16°41'37"E 5.46'
T-816 N73°18'23"W 6.67'	T-841 S73°18'23"E 0.33'
T-817 S73°18'23"E 0.33'	T-842 N73°18'23"W 11.33'
T-818 S16°41'37"E 5.46'	T-843 S16°41'37"W 5.00'
T-819 N73°18'23"W 6.67'	T-844 N73°18'23"W 6.67'
T-820 N16°41'37"E 5.00'	T-942 N89°51'04"W 7.24'
T-821 N73°18'23"W 11.33'	T-943 N89°51'04"W 9.00'



**LEGEND**

(R) DENOTES A RADIAL LINE	R DENOTES RADIUS DISTANCE	⊙ DENOTES A SET PERMANENT CONTROL POINT (LB 7344)	⊠ DENOTES A SET PERMANENT REFERENCE MONUMENT (LB 7344)
C/L DENOTES A CENTERLINE	L DENOTES ARC LENGTH DISTANCE	■ DENOTES A FOUND PERMANENT REFERENCE MONUMENT (LB 2171)	
DE DENOTES DRAINAGE EASEMENT	CA DENOTES CENTRAL ANGLE		
SUA DENOTES SEACOAST UTILITY AUTHORITY	LCB DENOTES LONG CHORD BEARING		
LS DENOTES LIFT STATION EASEMENT	CHD DENOTES CHORD DISTANCE		
EAE DENOTES EMERGENCY ACCESS EASEMENT	ORB DENOTES OFFICIAL RECORDS BOOK	⊡ DENOTES A SEACOAST UTILITY EASEMENT (ORB 17773, PAGE 469)	⊞ DENOTES AN INGRESS, EGRESS, DRAINAGE AND UTILITY EASEMENT (PB 103, PAGE 142)
	PB DENOTES PLAT BOOK		

**SURVEYOR'S NOTES**

1. THE BASE BEARING, AS SHOWN HEREON, IS S01°22'09"W ALONG THE EAST LINE OF TRACT "R", THE SHOPS OF DONALD ROSS REPLAT OF TRACT "A", RECORDED IN PLAT BOOK 103, PAGE 142.
2. IN THOSE INSTANCES WHERE UTILITY OR DRAINAGE STRUCTURES ARE CONSTRUCTED IN CONFLICT WITH THE PLATTED PERMANENT CONTROL POINT POSITION STRADDLERS MONUMENTED AS PERMANENT CONTROL POINTS WILL BE SET TO REFERENCE THE PLATTED POSITION.
3. LINES THAT INTERSECT CURVES ARE NOT RADIAL UNLESS OTHERWISE NOTED.
4. THIS INSTRUMENT WAS PREPARED BY WM. R. VAN CAMPEN, P.S.M. NO. 2424, IN AND FOR THE OFFICES OF ASSOCIATED LAND SURVEYORS, INC., 4152 WEST BLUE HERON BOULEVARD, SUITE 121, RIVIERA BEACH, FLORIDA, 33404

FILE: CIELOPLOT

FB:	WO.NO.: P238
SCALE: 1"=10'	DATE: 12/25/2004
DWN: KVC	SHEET 7 OF 28

**ASSOCIATED LAND SURVEYORS, INC.**  
 4152 W. BLUE HERON BOULEVARD-SUITE 121  
 RIVIERA BEACH FLORIDA 33404 LB NO. 7344  
 PHONE: (561) 848-2102 FAX: (561) 844-9859 EMAIL: ALSURVEY@AOL.COM